

# III International Congress on Languages and Cultures of the World

Facultad de Filosofía y Letras (Campus de  
Cartuja)

Universidad de Granada

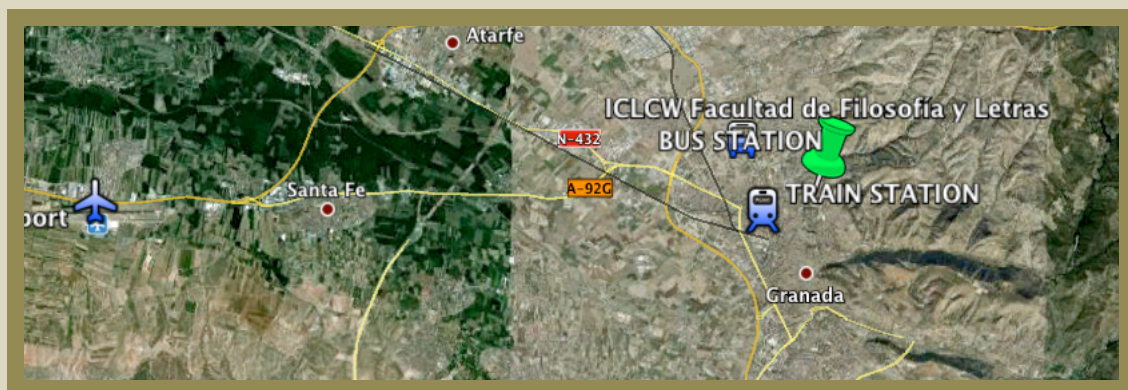
## ICLCW LOCATION

**IMPORTANT:** All Bus Stops in this guide are part of the public transportation service (ROBER <http://www.transportesrober.com>). Please note that due to the ongoing intense civil works activity in Granada some of the bus stops might be relocated overnight without prior notice.

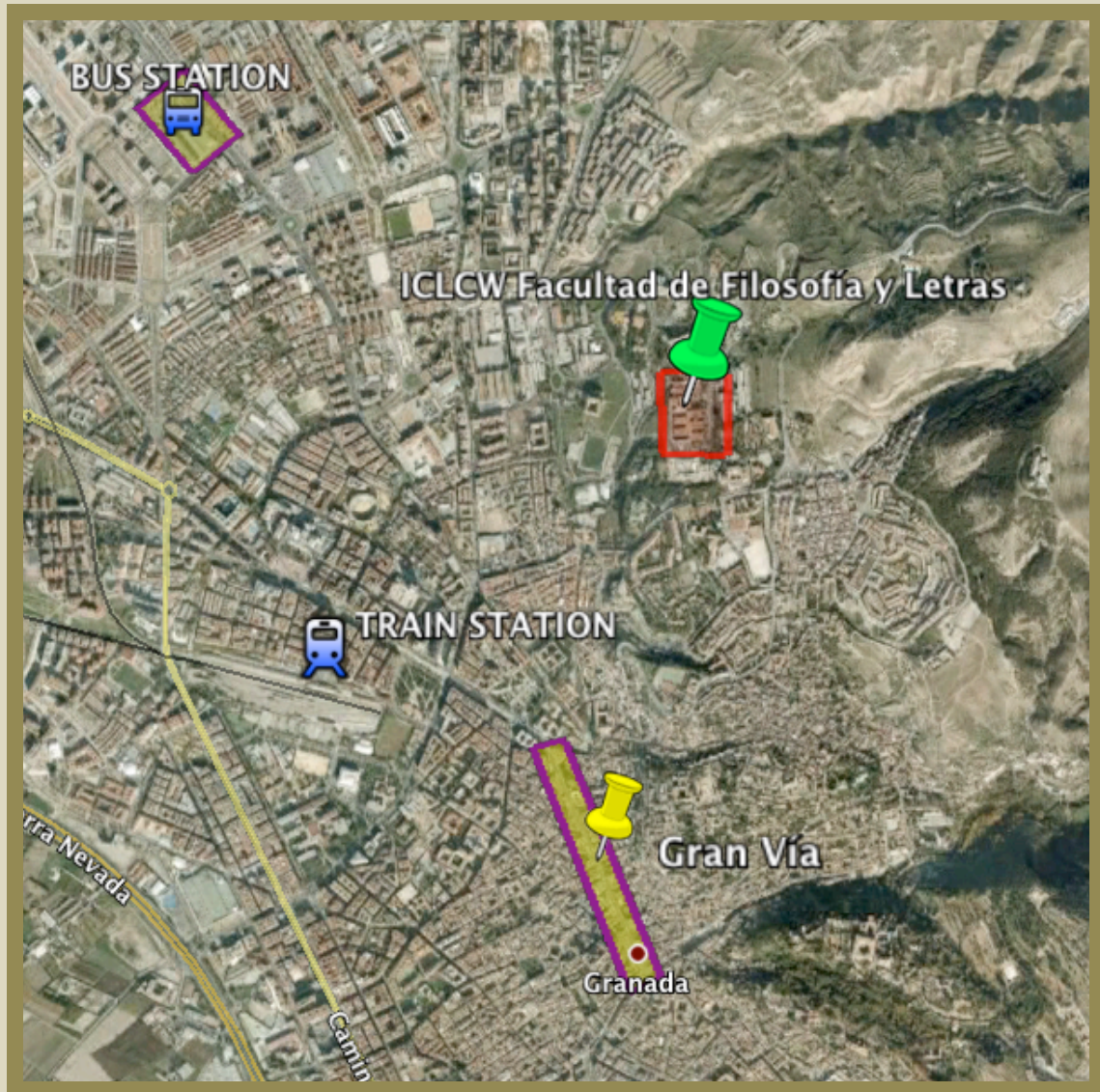
## MÁLAGA (AGP) & GRANADA (GRX) AIRPORTS



## GRANADA AIRPORT (GRX)



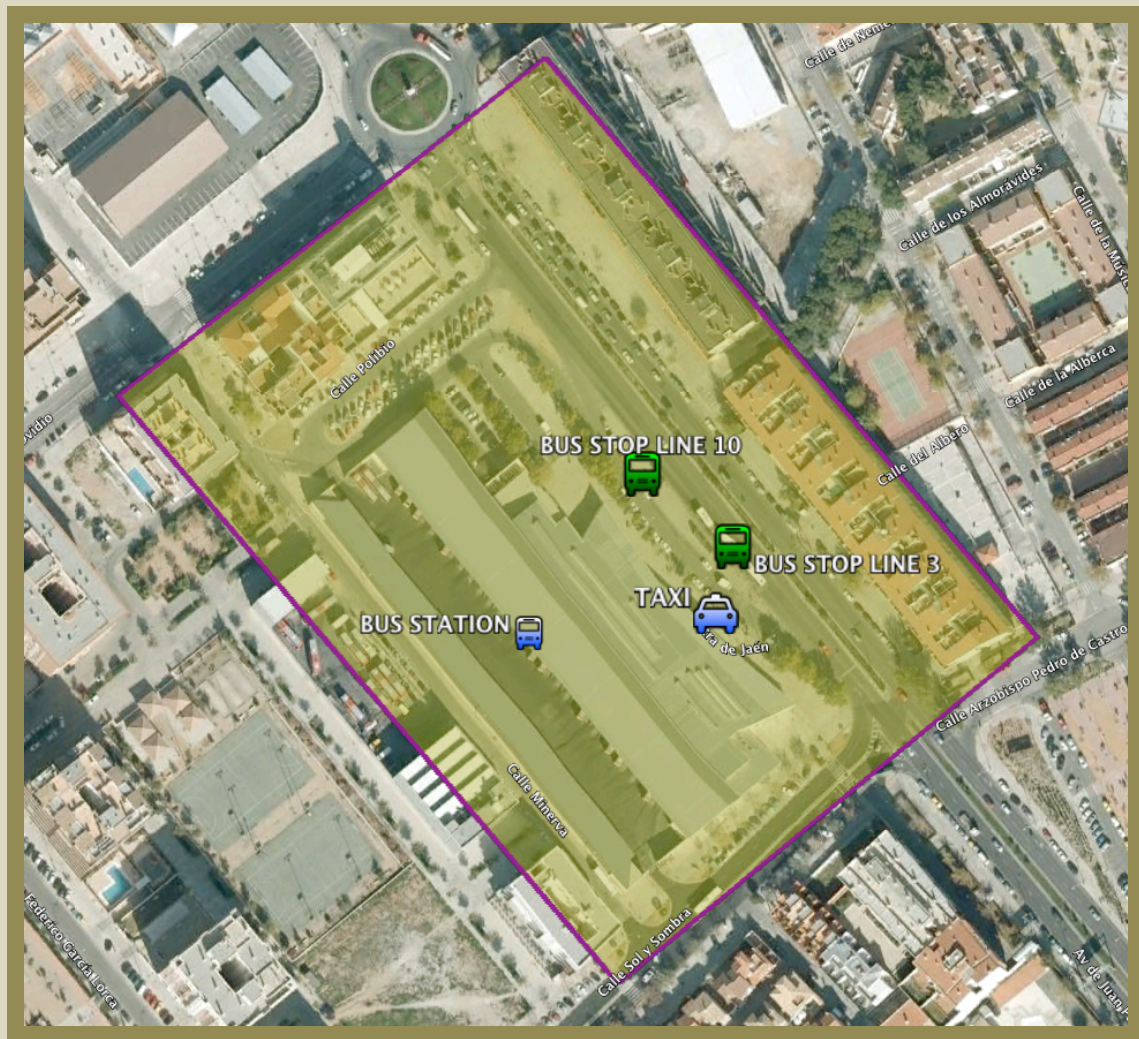
GRANADA Points of Interest



GRANADA

**BUS STATION**

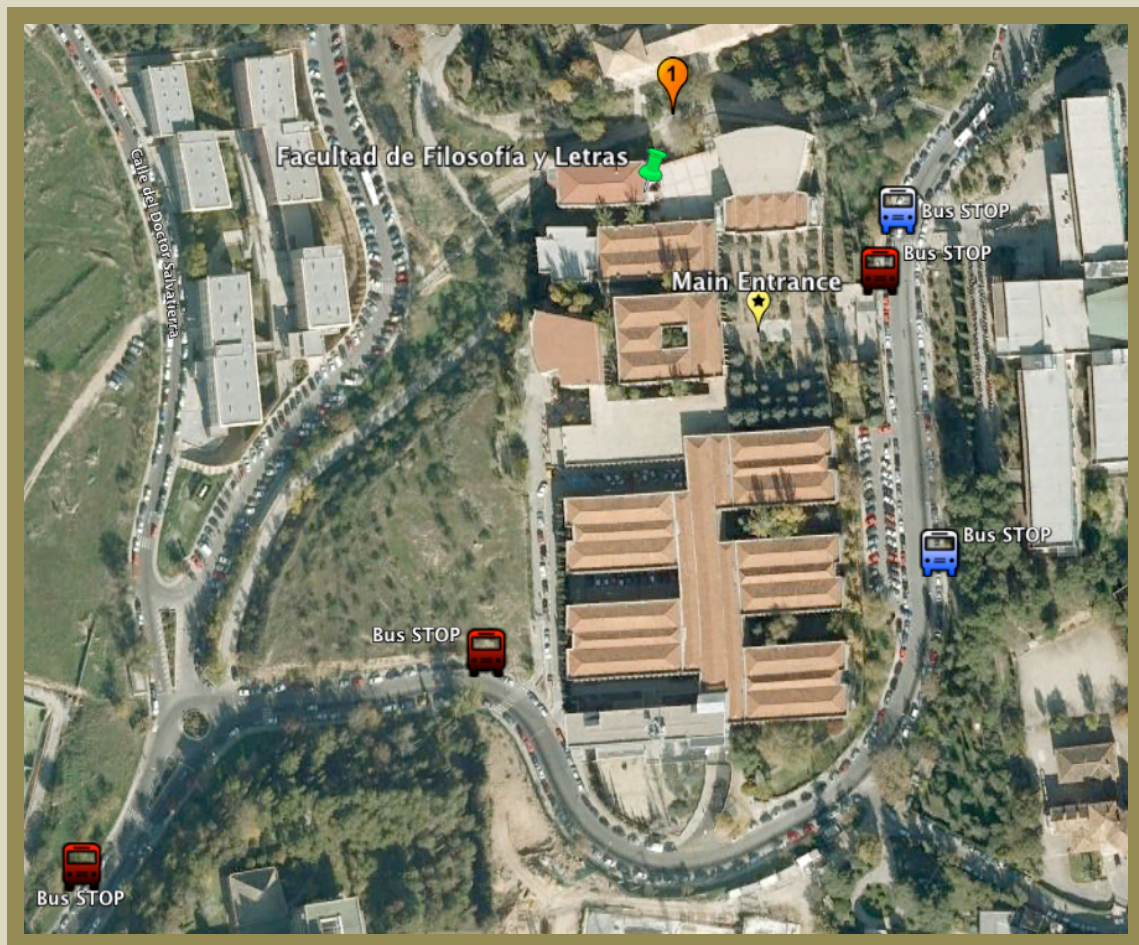
BUS LINES 3 & 10



### III International Congress on Languages and Cultures of the World

LOCATION Facultad de Filosofía y Letras (Campus Cartuja)

BUS LINES 8, C & U (**Blue Icons** mark **Incoming** Stops to ICLCW, **Red Icons** Outgoing)



Access the Faculty Building through the Main Entrance and follow the signs to the ICLCW Check-In desk that will be located about 20m to the left of the entrance.

