

10 μm



Variable Pressure

Mag = 1.00 K X  
WD = 7.1 mm

Signal A = VPSE

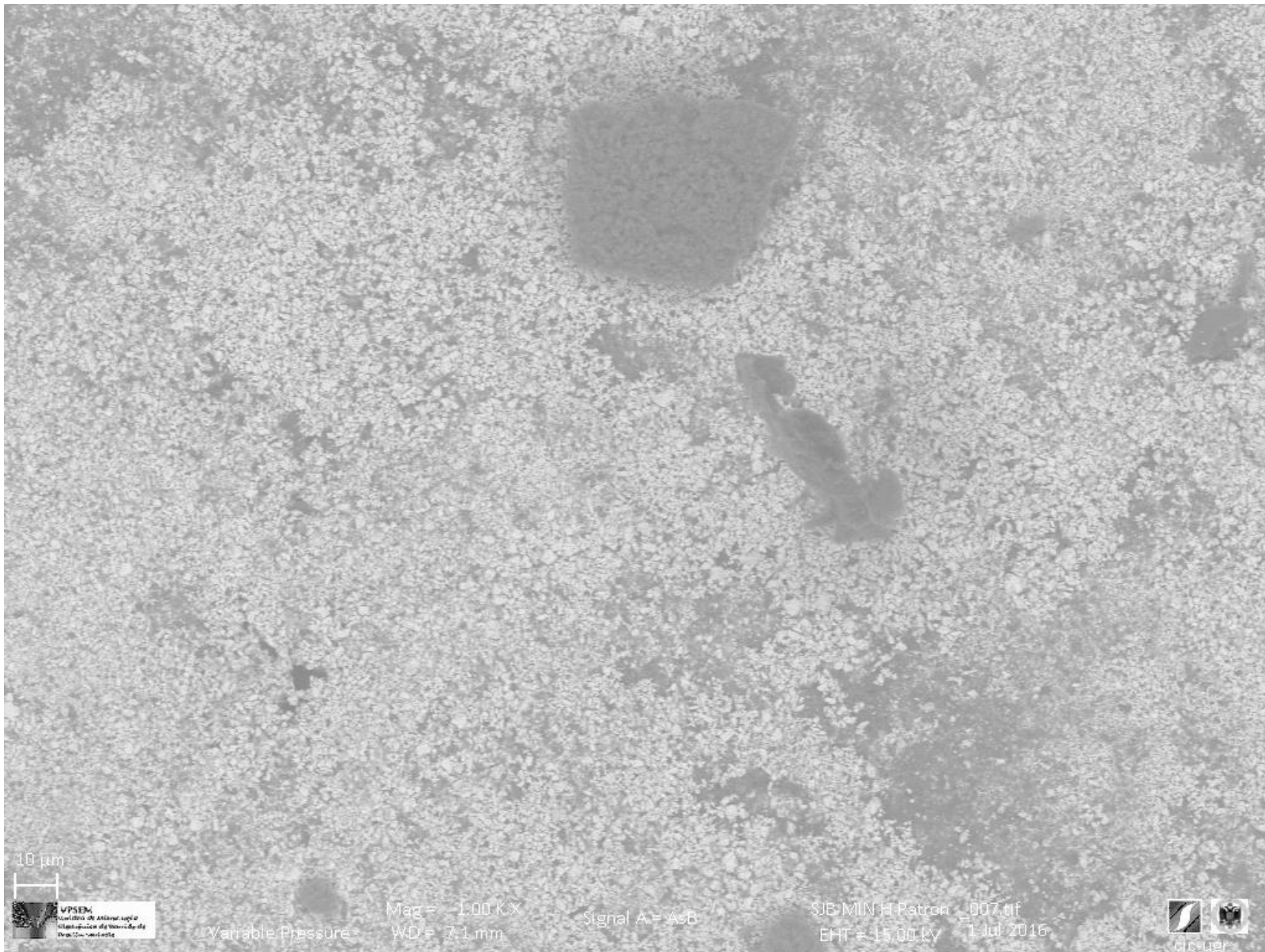
SJB\_MIN\_H\_Patron\_006.tif  
EHT = 15.00 kV 1 Jul 2016



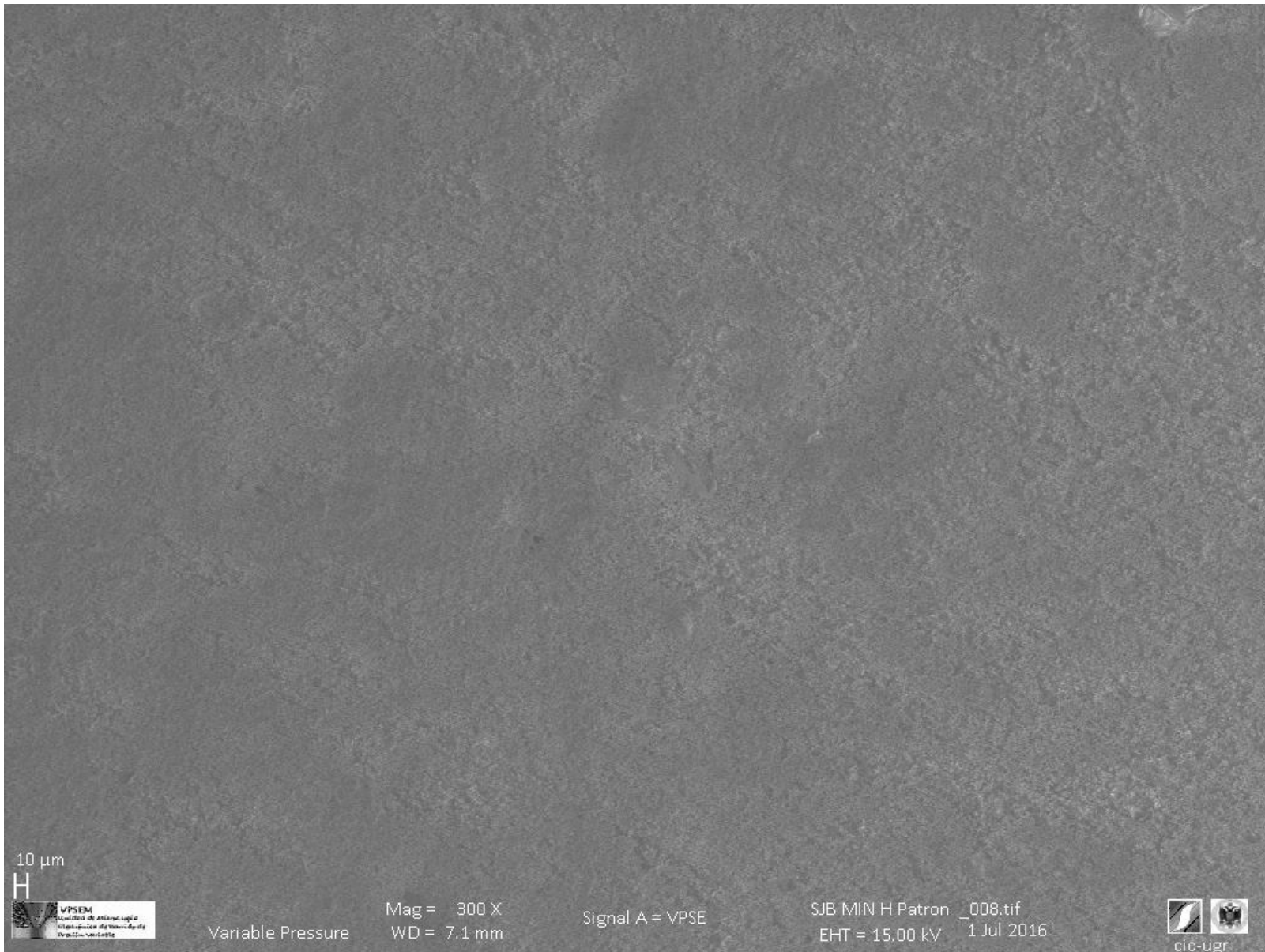
cic-ugr

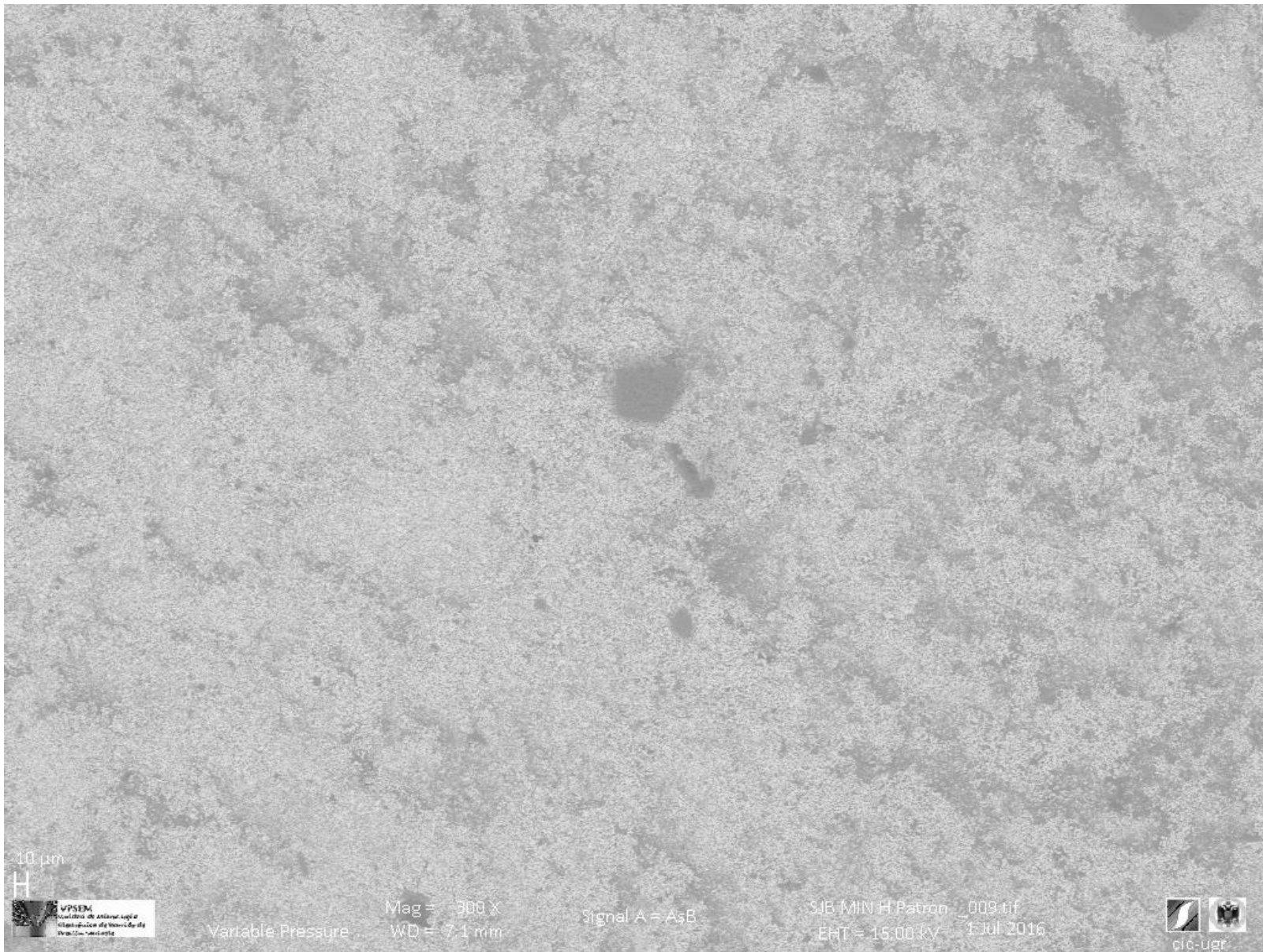
**OXFORD**  
INSTRUMENTS

*The Business of Science®*









10  $\mu$ m



WPSEM  
Unidad de Análisis Local  
Microscopía de Variedad de  
Presión - Variable

Variable Pressure

Mag = 300 X  
WD = 7.1 mm

Signal A = AsB

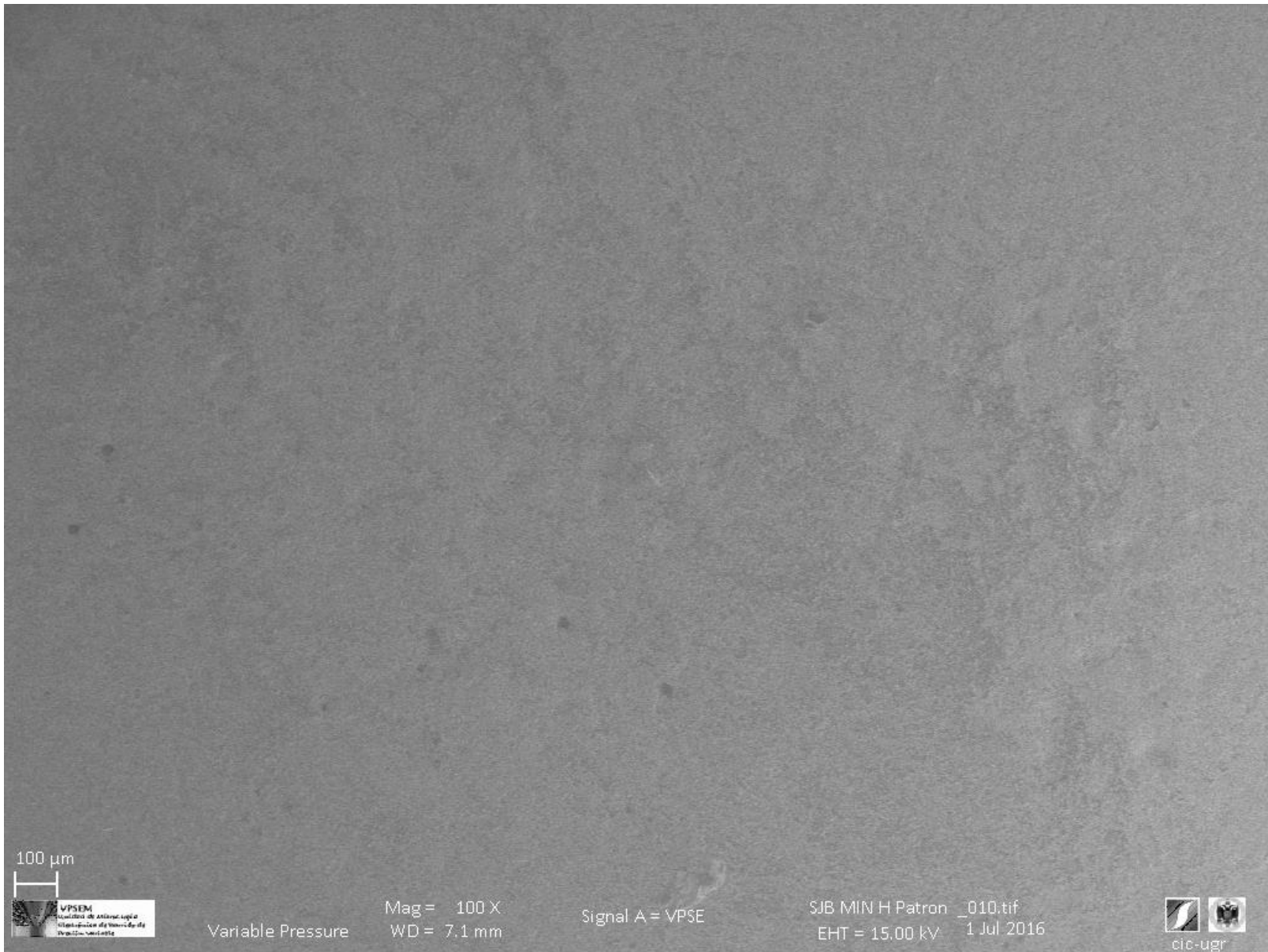
SJB MIN H Patron\_009.tif  
EHT = 15.00 kV 1 Jul 2016



cic-ugr

OXFORD  
INSTRUMENTS

The Business of Science®



100 µm



Variable Pressure

Mag = 100 X  
WD = 7.1 mm

Signal A = VPSE

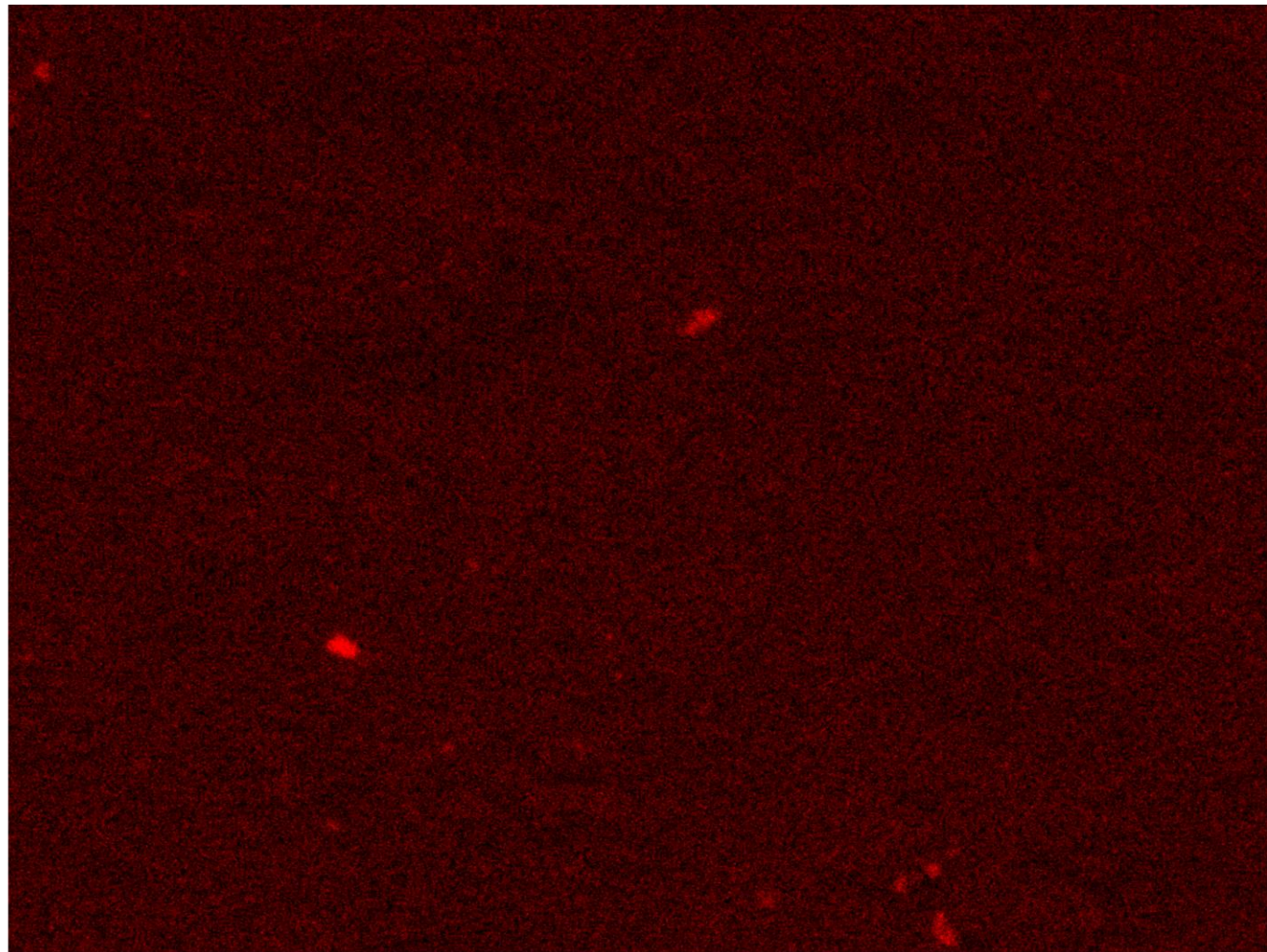
SJB MIN H Patron \_010.tif  
EHT = 15.00 kV 1 Jul 2016



cic-ugr

---

O K series



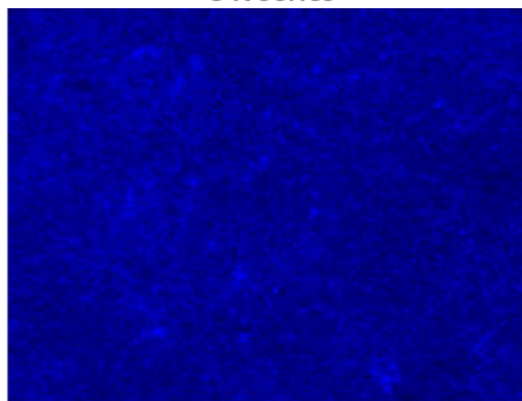
100μm

Pb M series



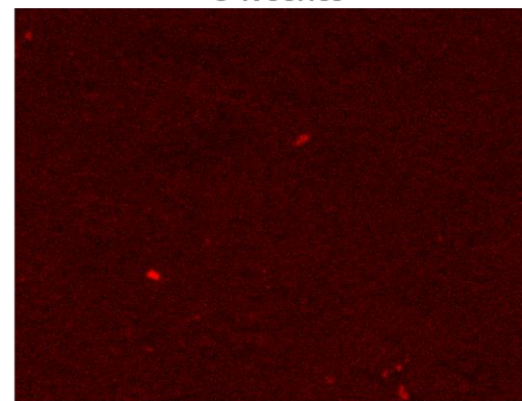
100µm

C K series



100µm

O K series



100µm