

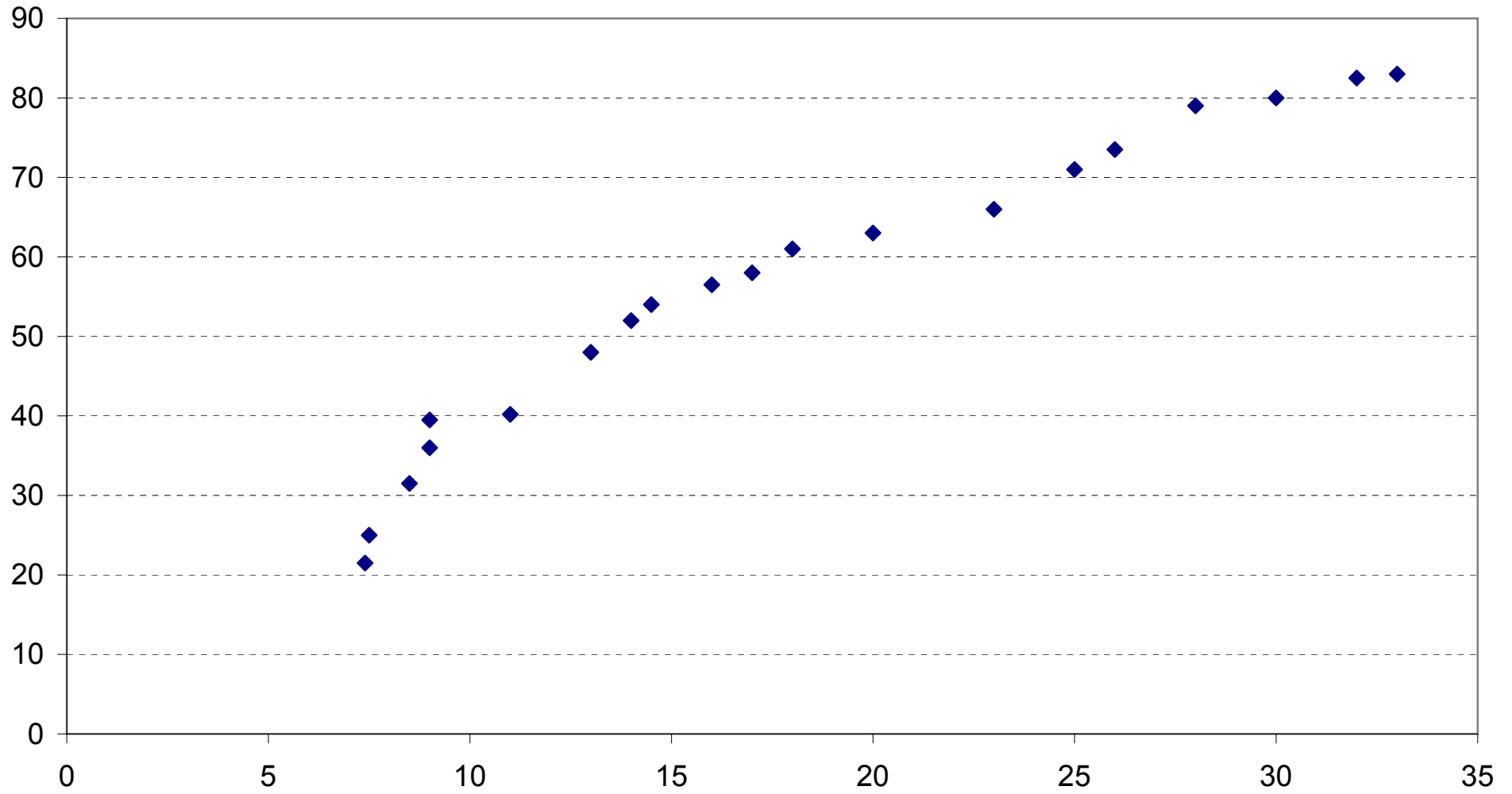
<i>Datos</i>				
x	concentración de estrona en saliva			
y	concentración de esteroide libre en plasma			
x	y			
7.40	21.50			
7.50	25.00			
8.50	31.50			
9.00	36.00			
9.00	39.50			
11.00	40.20			
13.00	48.00			
14.00	52.00			
14.50	54.00			
16.00	56.50			
17.00	58.00			
18.00	61.00			
20.00	63.00			
23.00	66.00			
25.00	71.00			
26.00	73.50			
28.00	79.00			
30.00	80.00			
32.00	82.50			
33.00	83.00			

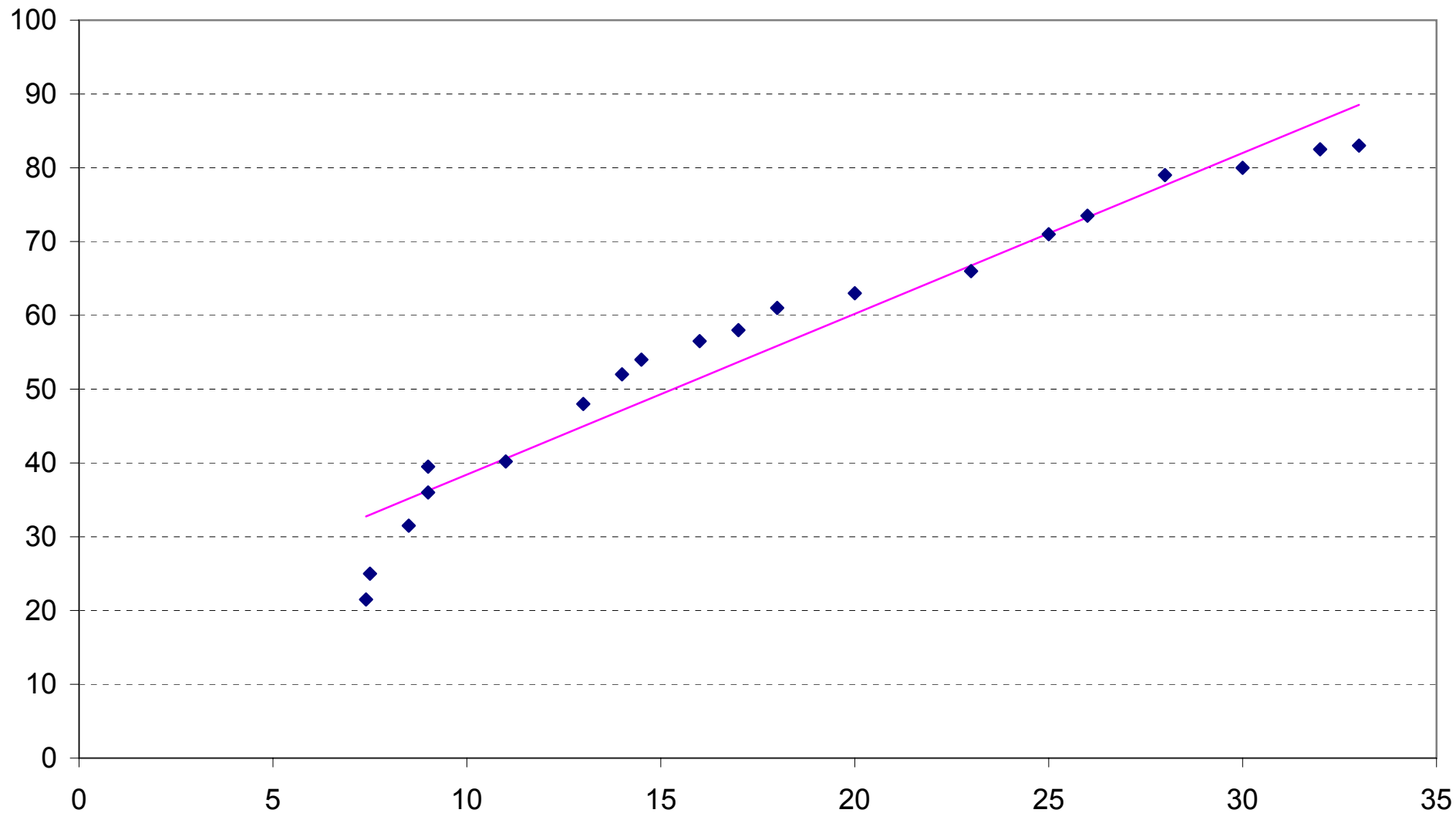
alpha =	0.05
n =	20
t(n-1,alpha/2) =	2.09302405

Parámetro	SE	Ext.Inferior	Ext.Super.
a	2.500247722	11.4049695	21.87112673
b	0.124929558	1.917129649	2.440090786

;
Extr.Sup
42.7578693
42.9757303
45.1543405
46.2436457
46.2436457
50.6008661
54.9580865
57.1366967
58.2260019
61.4939172
63.6725274
65.8511376
70.208358
76.7441887
81.1014091
83.2800194
87.6372398
91.9944602
96.3516807
98.5302909

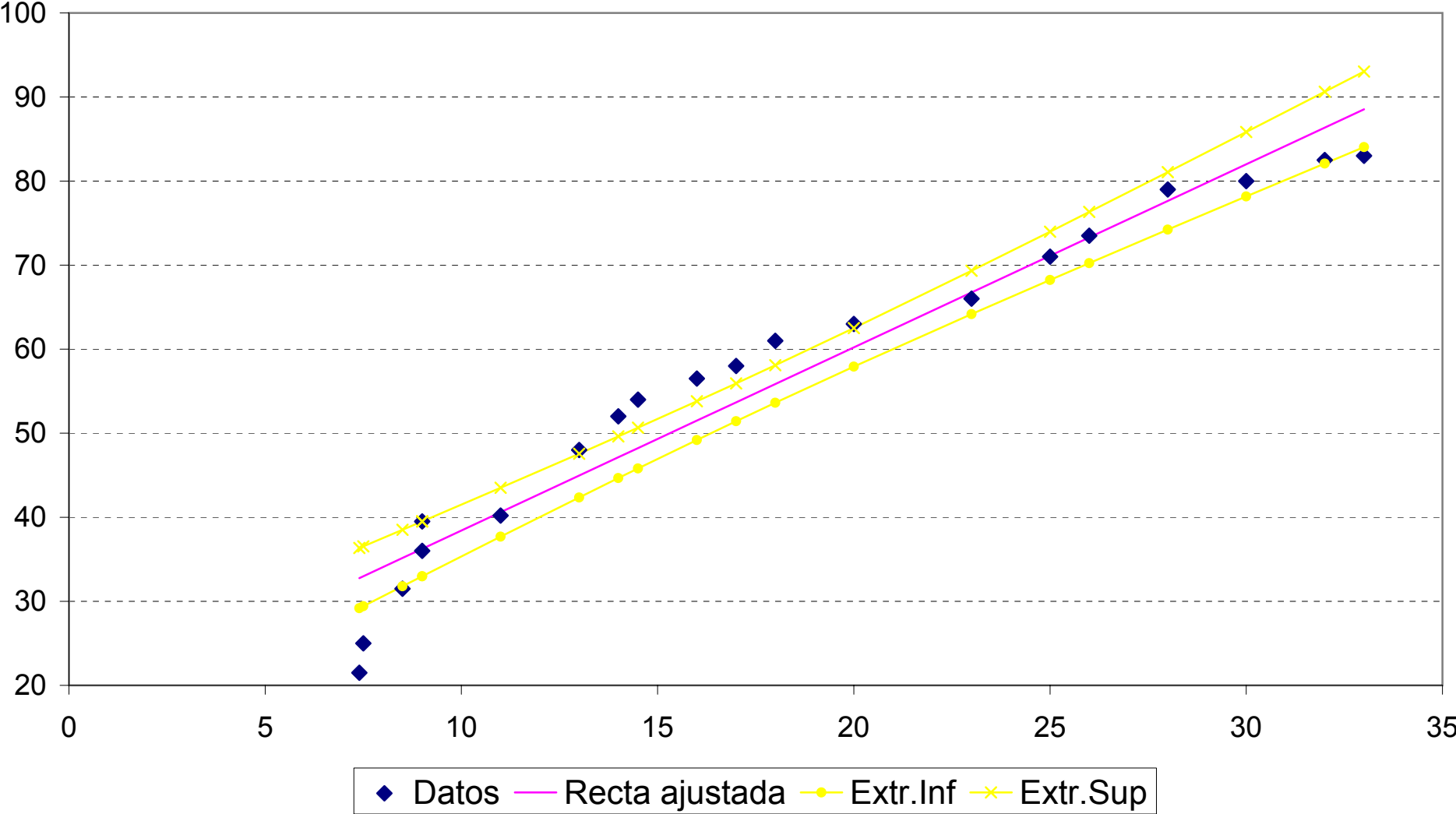
Diagrama de dispersión



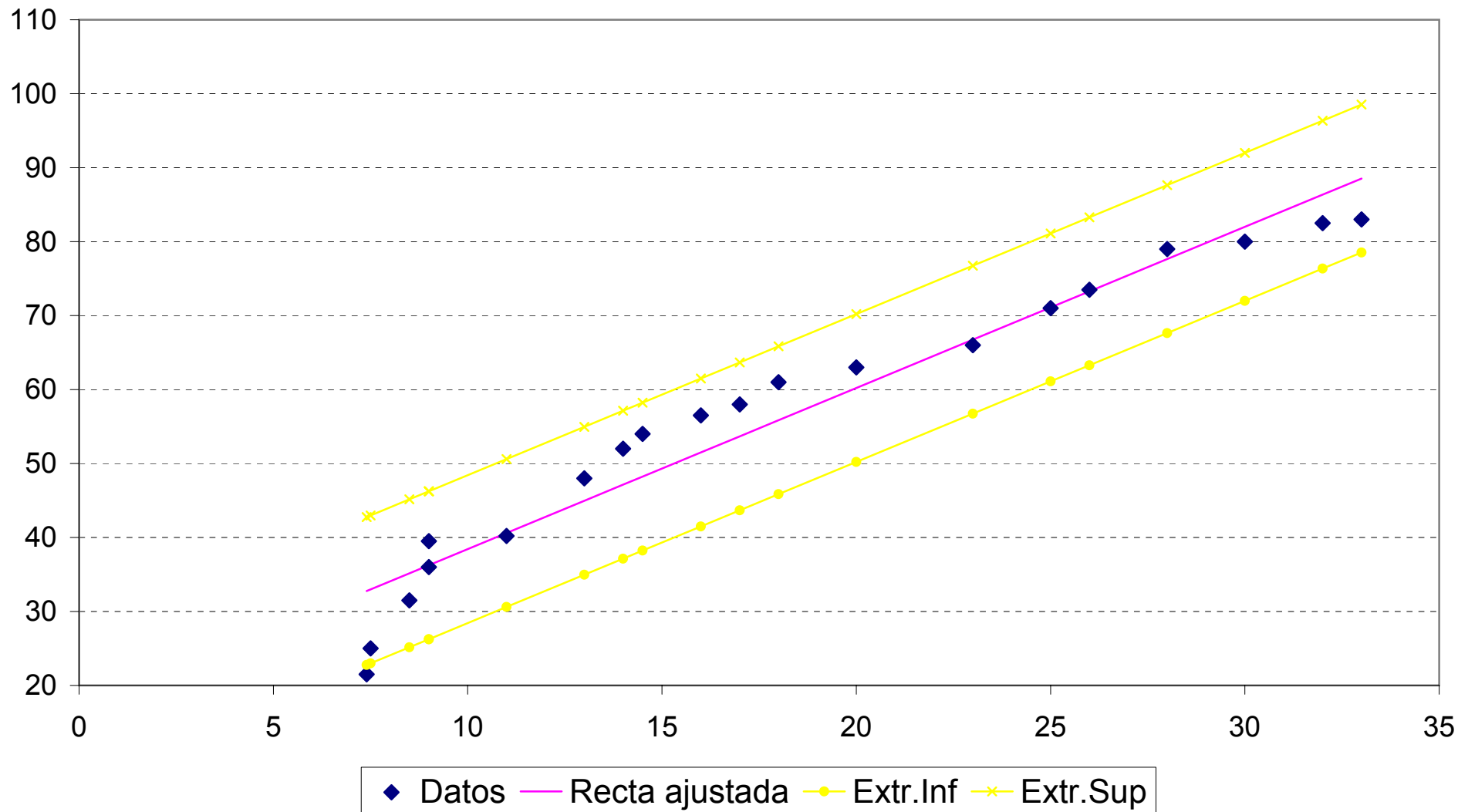


◆ Datos — Recta ajustada

Bandas de confianza para la función media



Bandas de confianza para las observaciones utilizadas en el ajuste



Bandas de confianza para las observaciones y predicciones

